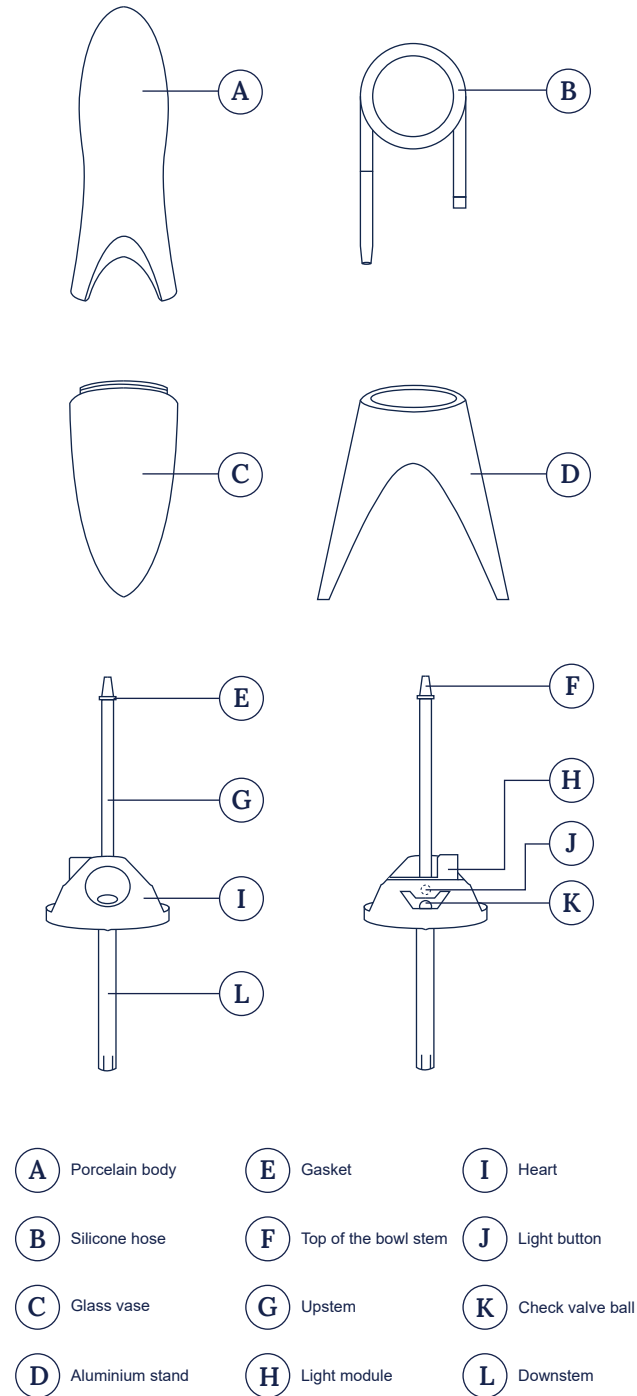




## Package Contents

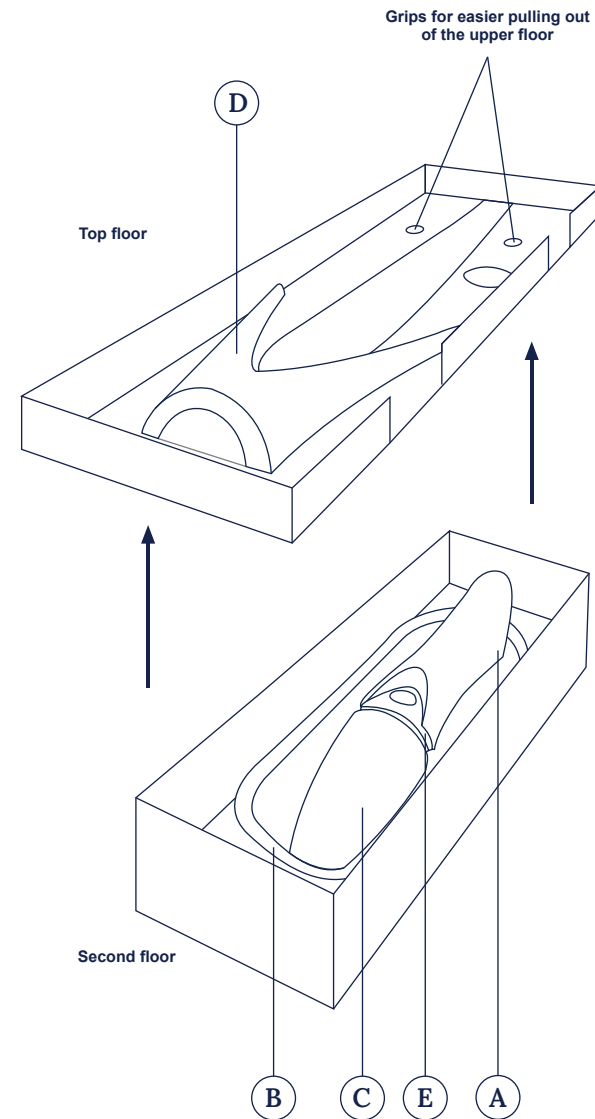
You are holding a box with your Anima hookah in your hands. The box is made of high-quality sustainable materials, designed not only for safe transport to you, but also for reuse, for example when traveling. Make sure that Anima has arrived in a complete package so you can enjoy it in a few moments.



## Packaging

Take a breath and get ready to unpack your Anima.

Place the box with your hookah on a flat and stable surface and open the lid carefully. Inside the box, you will find two floors of components. Remove the stand from the first floor and use the two grip holes to remove the top floor from the box. The second floor contains the remaining components of the hookah.

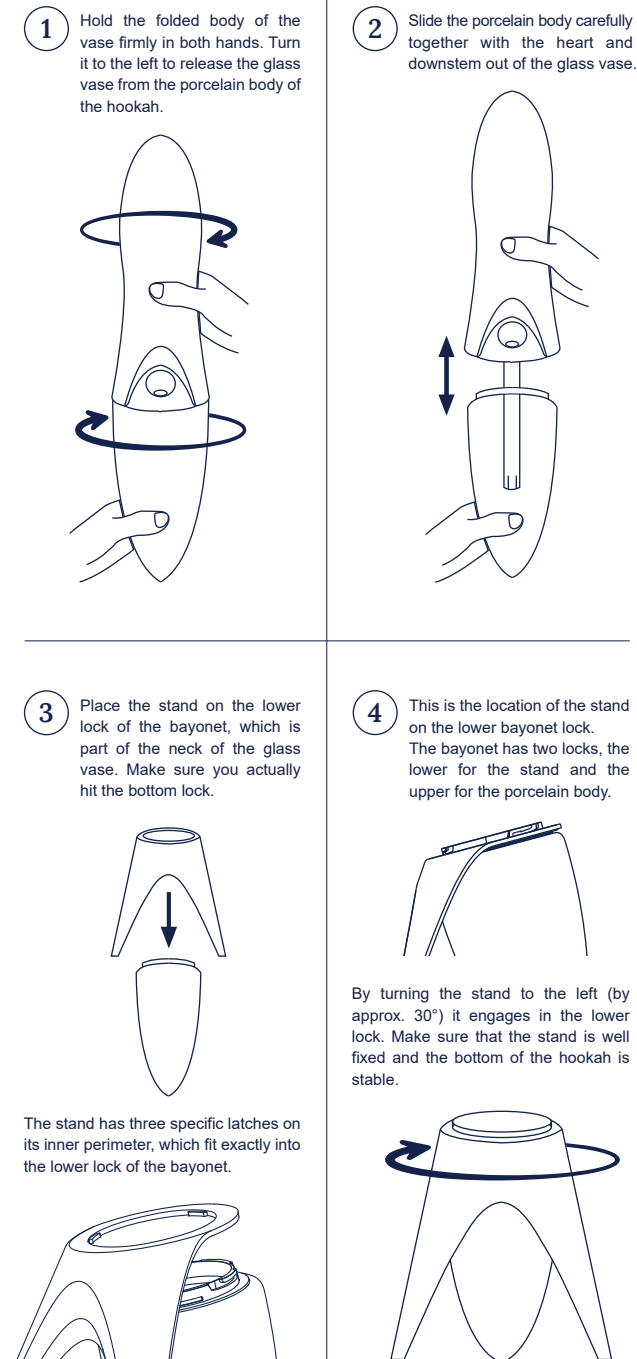


### WARNING:

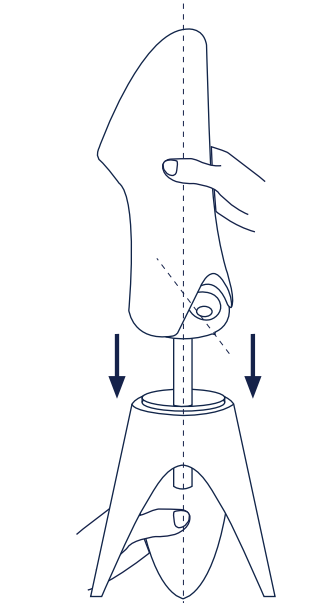
The box has a higher weight. Handle the hookah and its components carefully. Do not tilt the box or use more than adequate force to open it. The hookah is made of fragile materials, handle them with caution.

## Basic Assembly

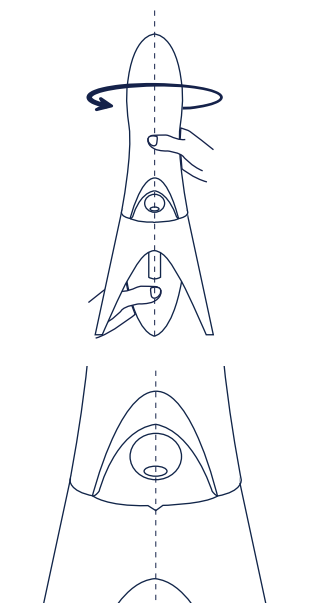
Below you can find the instructions for the assembly of the Anima without preparation for smoking as such. To prepare for a smoking session, we recommend following your favourite rules. Before first use, insert three AAA batteries into the light module. If the light effects do not work after completing the Anima, check the battery status – see the "Light Module" section for more information.



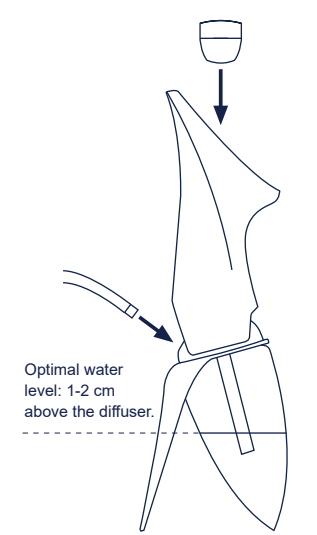
5 Place the assembled body and heart of the hookah on the upper lock of the bayonet on the glass vase. When placed correctly, the tab on the heart of the hookah (see the detail) should be offset from the central axis of the vase and



6 Turn the porcelain body to secure the hookah. To check that you have assembled the hookah correctly, there is a tongue on the heart of the hookah (see the detail), which should pass through the central axis of the hookah.



7 Insert the bowl (not included in the package) through the gasket on the top of the bowl stem and insert the hose into the circular hole of the heart of the hookah.



? **How does the hookah work?**  
Air flow inside the hookah and check valve function.

